

Johnson County Health Department

Influenza Surveillance Report: November 7, 2011

Methods

Four hospitals or clinics have reported influenza cases during the 2011/12 influenza season. In comparison, thirty-two hospitals and clinics reported influenza cases to the Johnson County Health Department (JCHD) during the 2010/11 influenza season. Information reported includes the date, gender, birth date, zip code, date of specimen collection, rapid test result and confirmatory test result.

Report dates rather than specimen collection dates are used to measure incidence because, historically, they are mostly identical, in addition, specimen collection dates are missing in many cases. Report dates are recoded to correspond with the Morbidity and Mortality Monthly Report (MMWR) week which categorizes dates into calendar weeks; MMWR week one is the first week of the year that contains four or more days in the new year. This allows for weekly comparisons between years.

Rapid test results are used to categorize influenza type because confirmatory tests are not available for most cases, historically. Age is calculated by subtracting the date of birth from the report date. Ages are then recoded into age groups. A frequency table has been produced to assess if the distribution among these characteristics is similar between influenza seasons (Table 1). A frequency polygon (Figure 1) and a cumulative frequency polygon (Figure 2) have been produced to present a graphical representation of influenza incidence.

Results and Discussion

There have been five reported cases of influenza in the 2011/12 season. This is four more cases than were reported at this time last year. To date the incidence remains low and has not exceeded the mean number of cases reported per week (7.7) during the general influenza season (October to May) last year.

Too few cases have been reported in 2011/12 to begin making comparisons for case characteristics between the 2010/11 and 2011/12 influenza seasons. However, the table was produced for consistency of reporting. In general, p-values less than 0.05 mean that the distribution of characteristics differs between years.

If you have questions or comments about this report please feel free to contact me.

Kevin Kovach, MSc, CHES
Epidemiologist
kevin.kovach@jocogov.org
Phone: (913) 477-8368

Figure 1. Influenza cases reported in Johnson County (2010/11 & 2011/12)

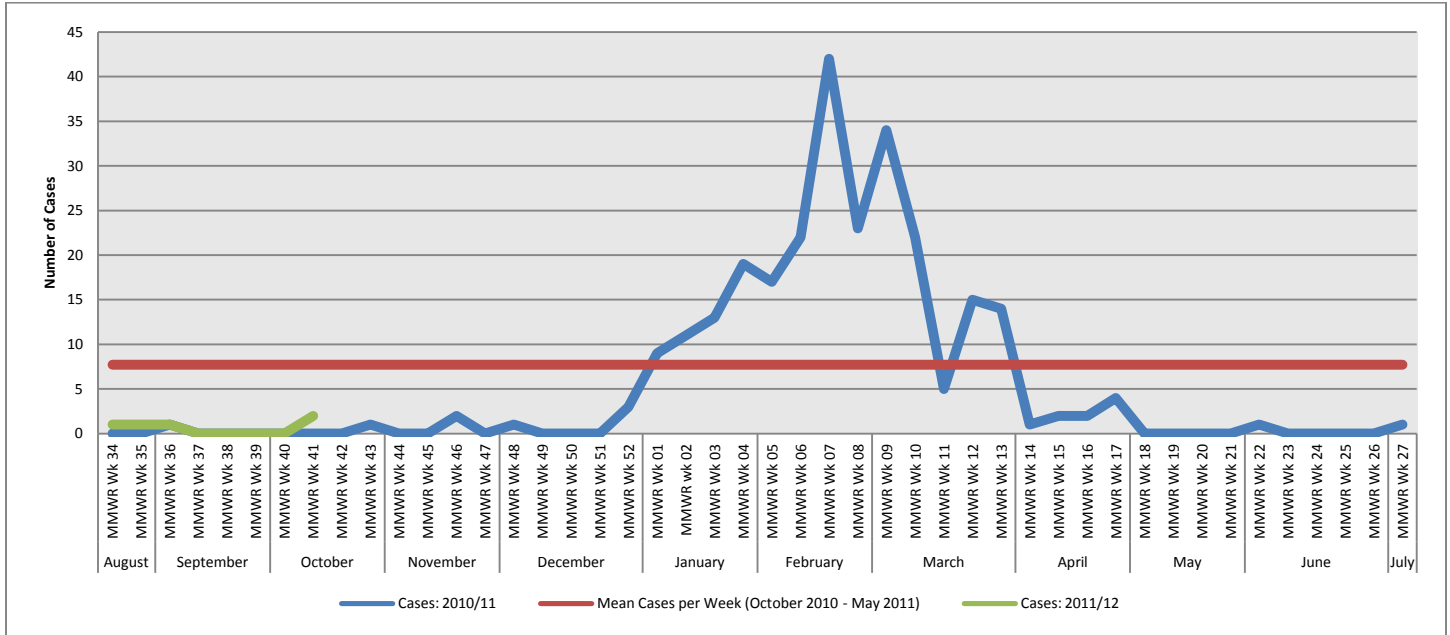


Table 1: Influenza case characteristics (2010/11 & 2011/12)

Characteristics	2010/11		2011/12		Chi ² P-value
	Number	Percent	Number	Percent	
Gender					
Male	124	47%	3	60%	p=0.56
Female	140	53%	2	40%	
Age Group					
<5 Years	59	23%	0	0%	p=0.03
5-24 Years	105	41%	0	0%	
25-49 Years	44	17%	3	60%	
50-64 Years	13	5%	0	0%	
65+ Years	36	14%	2	40%	
Test Results					
Influenza A	185	71%	4	80%	p=0.02
Influenza B	72	28%	0	0%	
Influenza A/B	3	1%	1	20%	

Figure 2. Cumulative frequency of influenza cases in Johnson County (2010/11 & 2011/12)

